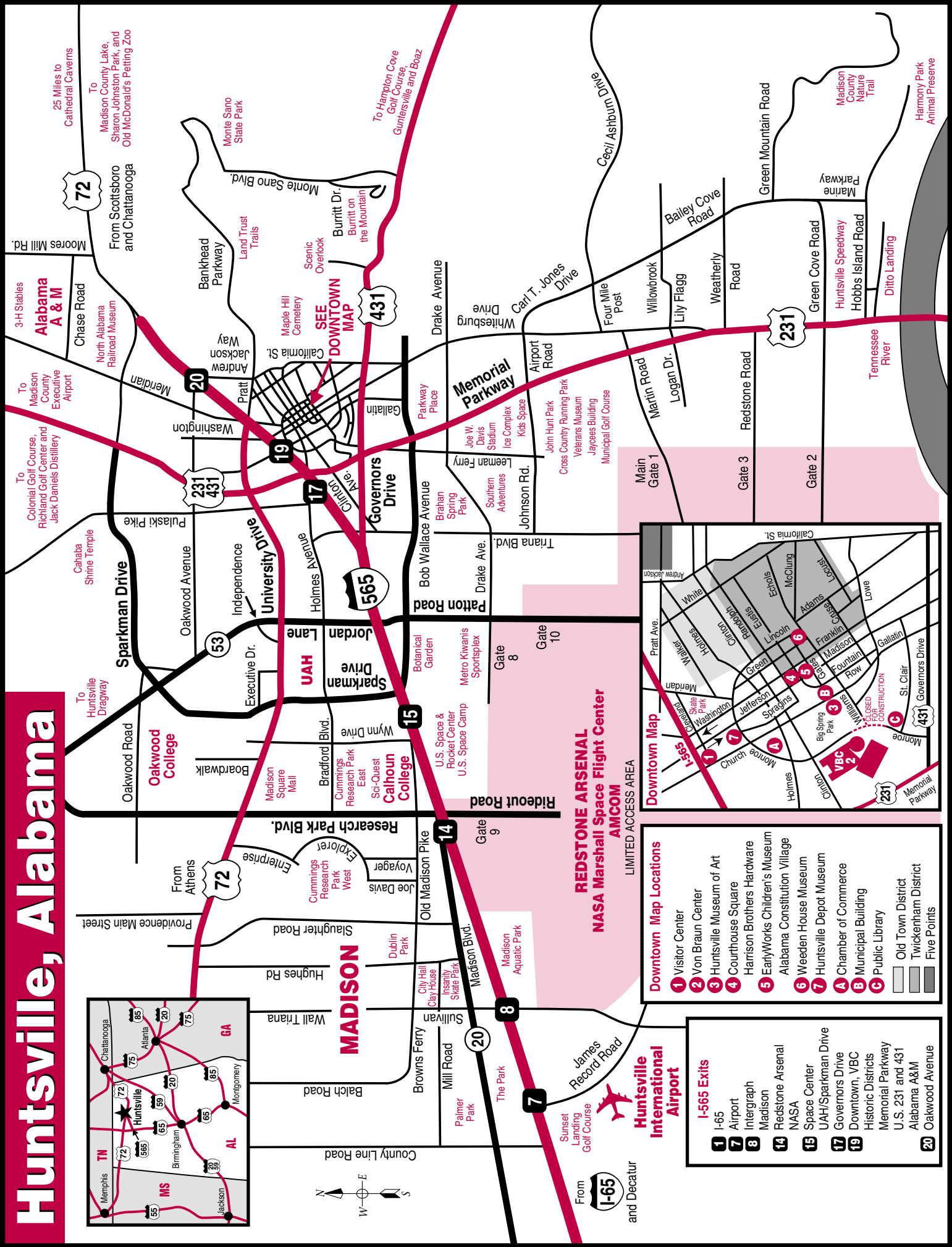
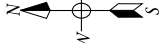
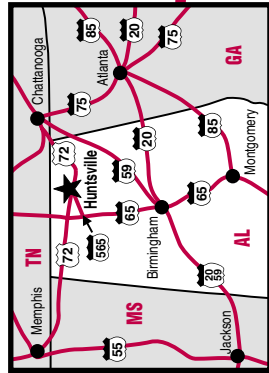


Huntsville, Alabama



Downtown Map Locations

- 1 Visitor Center
- 2 Von Braun Center
- 3 Huntsville Museum of Art
- 4 Courthouse Square
- 5 Harrison Brothers Hardware
- 6 EarlyWorks Children's Museum
- 7 Alabama Constitution Village
- 8 Weeden House Museum
- 9 Huntsville Depot Museum
- A Chamber of Commerce
- B Municipal Building
- C Public Library

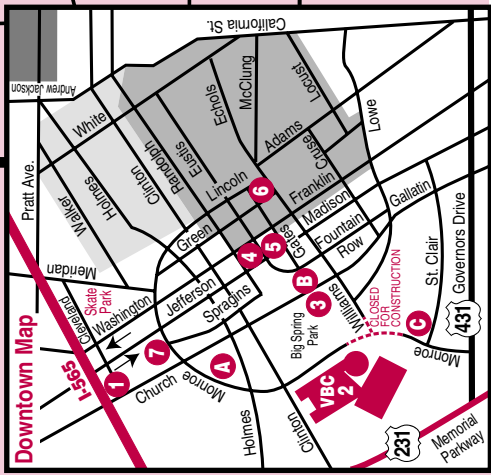
Old Town District
 Twickenham District
 Five Points

I-565 Exits

- 1 I-65
- 7 Airport
- 8 Intergraph
- 14 Madison
- 15 Redstone Arsenal
- 17 Space Center
- 19 UAH/Sparkman Drive
- 20 Governors Drive

Huntsville International Airport

- 1 Downtown, VBC
- 2 Historic Districts
- 3 Memorial Parkway
- 4 U.S. 231 and 431
- 5 Alabama A&M
- 6 Oakwood Avenue



REDSTONE ARSENAL
NASA Marshall Space Flight Center
AMCOM

LIMITED ACCESS AREA

SEE DOWNTOWN MAP

MADISON

Huntsville International Airport

From I-65 and Decatur

25 Miles to Cathedral Caverns

To Madison County Lake, Sharon Johnston Park, and Old McDonald's Petting Zoo

3-H Stables

Alabama A & M

North Alabama Railroad Museum

From Scottsboro and Chattanooga

To Madison County Executive Airport

Colonial Golf Course, Richland Golf Center and Jack Daniels Distillery

Cahaba Shrine Temple

Huntsville Drieway

From Athens

Enterprise

Providence Main Street

From Memphis

From Birmingham

From Jackson

Monte Sano State Park

Land Trust Trails

Scenic Overlook

Burritt Dr. Burritt on the Mountain

To Hampton Cove Golf Course, Gunter'sville and Boaz

Monte Sano Blvd.

Bankhead Parkway

Andrew Jackson Way

Washington

Meridian

Chase Road

UAH

Sparkman Drive

Jordan Lane

Executive Dr.

Independence

University Drive

Holmes Avenue

Governors Drive

U.S. Space & Rocket Center

U.S. Space Camp

U.S. Space & Rocket Center

U.S. Space Camp

U.S. Space & Rocket Center

U.S. Space Camp

Palmer Park

The Park

Sunset Landing Golf Course

James Record Road

Maple Hill Cemetery

Drake Avenue

Whitesburg Drive

Carl T. Jones Drive

Four Mile Post

Willowbrook

Lily Flagg

Weatherly Road

Green Mountain Road

Memorial Parkway

John Hunt Park

Veterans Museum

Jaycees Building

Municipal Golf Course

Leeman Ferry

Southern Adventures

Branan Spring Park

Johnson Rd.

Patton Road

Drake Ave.

Triana Blvd.

U.S. Space & Rocket Center

U.S. Space Camp

U.S. Space & Rocket Center

U.S. Space Camp

U.S. Space & Rocket Center

U.S. Space Camp

Palmer Park

The Park

Sunset Landing Golf Course

James Record Road

Palmer Park

The Park

Sunset Landing Golf Course

James Record Road

Green Mountain Road

Martha Parkway

Huntsville Speedway

Hobbs Island Road

Ditto Landing

Tennessee River

Harmony Park Animal Preserve

Madison County Nature Trail

Gate 1

Main Gate

Gate 2

Gate 3

Redstone Road

Gate 8

Gate 9

Gate 10

U.S. Space & Rocket Center

U.S. Space Camp

U.S. Space & Rocket Center

U.S. Space Camp

U.S. Space & Rocket Center

U.S. Space Camp

Palmer Park

The Park

Sunset Landing Golf Course

James Record Road

Palmer Park

The Park

Sunset Landing Golf Course

James Record Road

ATTRACTIONS

VISITOR CENTER • Brochures, calendars and hotel information available through the Convention & Visitors Bureau Visitor Center located at 500 Church Street and Huntsville International Airport. Open every day. 256-533-5723.

ALABAMA CONSTITUTION VILLAGE • A living village commemorating Alabama's entry into the Union at the 1819 Constitutional Convention. Franklin Street at Gates Avenue. 564-8100 or 1-800-678-1819.

BURRITT ON THE MOUNTAIN • Former home of physician. Historic structure includes log cabins, blacksmith shop and church. Nature trails. Panoramic views. 3101 Burritt Drive 536-2882.

EARLYWORKS Children's History Museum • Youngsters enjoy hearing the story-telling tree and talking clock. Board a floating keelboat. 404 Madison St. 564-8100 or 1-800-678-1819.

HARRISON BROTHERS HARDWARE • Established in 1879, Alabama's oldest operating hardware store is operated by the Historic Huntsville Foundation. Nostalgic items displayed and sold. 124 South Side Square 536-3631.

HISTORIC DISTRICTS • The Twickenham historic district north and east of the Courthouse Square contains the state's largest collection of antebellum homes, dating from 1814. The Old Town district contains Federal and Victorian homes. Five Points contains many bungalows. The railroad bisects Historic Madison.

HISTORIC HUNTSVILLE DEPOT • Guided tours of the restored 1860 passenger depot. Civil War exhibits and period locomotive featured. 320 Church Street. 564-8100 or 1-800-678-1819.

HUNTSVILLE BOTANICAL GARDEN • The 130-acre garden east of the Space & Rocket Center features gardens for roses, herbs, ferns, daylilies and aquatic plants. Nature trails. The Butterfly House is open summers. 4747 Bob Wallace Avenue. 830-4447.

HUNTSVILLE MUSEUM OF ART • The museum in Big Spring Park has a growing collection of prints, paintings and sculptures. Galleries feature touring exhibits and the museum's permanent collection. 300 Church Street. 535-4350.

MAPLE HILL CEMETERY • The city's historic cemetery dates from 1822 and contains the graves of five governors, Civil War soldiers and many civic leaders. East of California Street.

SCI-QUEST - North Alabama Science Center • Fun-filled, hands-on children's museum adjoins Calhoun Community College. 102-D Wynn Drive. 837-0606.

STATE BLACK ARCHIVES/MUSEUM • A&M campus. 851-5846.

U.S. SPACE & ROCKET CENTER • See America's largest rocket collection plus Apollo spacecraft, Space Shuttle replica, flight simulators and Space Camp. IMAX® theater. I-565 exit 15. 837-3400.

VETERANS MEMORIAL MUSEUM • 2060-A Airport Road. 883-3737.

VON BRAUN CENTER • North Alabama's multi-purpose entertainment, convention and sports complex. The center contains a 10,000-seat arena, concert hall, playhouse, banquet hall and 104,000 square feet of exhibit space. 700 Monroe Street. 533-1953.

WEEDEN HOUSE MUSEUM • Located in the Twickenham Historic District, the 1819 Federal house was the birthplace of 19th-century artist Maria Howard Weeden. 300 Gates Avenue. 536-7718.

PARKS & RECREATION

BIG SPRING INTERNATIONAL PARK • Located in the heart of Huntsville just west of the Courthouse Square, Big Spring is the site where pioneer John Hunt built a cabin in 1805. The park contains gifts donated by foreign countries. Panoply art festival and Big Spring Jam music festival held here.

BRAHAN SPRING PARK • City park containing tennis courts, baseball fields, frisbee golf course, horseshoe pitching courts, playgrounds, picnic areas and lagoons for fishing. Indoor Olympic-size pool. Drake Avenue west of Memorial Parkway.

CROSS COUNTRY RUNNING PARK • This well-marked cross country course follows a grassy path for a two-mile or three-mile loop between the old airport runway and golf course. John Hunt Park on Airport Road off U.S. 231 S.

DITTO LANDING MARINA • Situated along the Tennessee River, with full boating facilities, wet and dry storage, transient docks, picnic tables, picnic pavilions, campsites, lighted tennis courts, softball diamond and playground. From South Memorial Parkway, turn east on Hobbs Island Road and right on Ditto Landing Rd. 882-1057.

ICE COMPLEX • Hosts public skating on two National Hockey League regulation rinks. Near Joe Davis Stadium off South Memorial Parkway on Leeman Ferry Road. 883-3774.

JOE DAVIS STADIUM • Home to the Huntsville Stars baseball team. 3125 Leeman Ferry Rd. 882-2562.

THE LAND TRUST TRAILS • Year-round hiking on 547 acres of the beautiful Monte Sano preserve. Ten different trails offer hiking opportunities from moderate to strenuous levels and begin off Bankhead Parkway. For trail maps call 534-LAND.

MADISON COUNTY LAKE • A state-owned public lake on 105 acres. Boat rentals, fishing licenses and permits are available at the concession building. Located on County Lake Road near Gurley. 776-4905.

MONTE SANO STATE PARK • The 2,000-acre park, located within Huntsville city limits, offers 14 rustic rental cabins, hiking trails, picnic and playground facilities, RV hook-ups, primitive camping sites, electricity and water. A spectacular view of the Tennessee Valley is below. 5105 Nolen Avenue. 534-3757.

NATURE TRAIL • Located on Green Mountain 12 miles from downtown Huntsville. The 72-acre Nature Trail has wooded paths, a 16-acre lake, picnic pavilion and picnic area, chapel, a covered bridge, wildlife sanctuary, 2 miles of trail and a Braille Trail. South Shawdee Road. 883-9501.

RECREATION SERVICES • Offering recreational opportunities in tennis, swimming, athletic activities and passive activities for adults, 427-5230. Special facilities include two 18-hole, par 72 golf courses—Municipal Golf Course, 880-1151, located near center of town off South Memorial Parkway and Sunset Landing Golf Club, 464-5050, located at Huntsville International Airport.

ROBERT TRENT JONES GOLF TRAIL (HAMPTON COVE) • Hampton Cove is the northernmost of Alabama's public golf courses designed by legendary golf architect. 54 holes. Located 9 miles from downtown Huntsville on U.S. 431 South. 551-1818.

SHARON JOHNSTON PARK • 250-acre park, established in memory of a Huntsville resident, contains 12-acre fishing lake, Olympic pool, sanctioned horse show arena, shelters and barbecue grills. Coleman Road near New Market. 379-2868.

Huntsville/Madison County Convention & Visitors Bureau

500 Church Street, Suite One • Huntsville, AL 35801 • 256-551-2230 • 800-SPACE-4-U • www.huntsville.org